

7.3 Triangles

EQ: How can you construct triangles?

Classify triangles using angles

1. Acute Triangles



$< 90^\circ$
all acute angles

2. obtuse Triangle



1 angle is obtuse

3. Right Triangle



1 right angle

4. Equiangular Triangle



3 congruent angles

Classify Triangles using sides

1. Scalene Triangle



no congruent sides

2. Isosceles Triangle



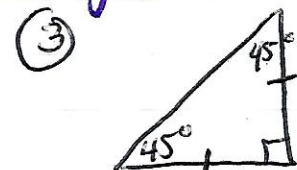
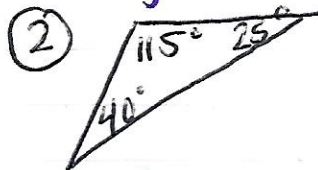
at least 2 congruent sides

3. Equilateral triangle



3 congruent sides

Example 1: Classify the triangle.



sides →

Isosceles

Scalene

Isosceles

angles →

Acute

Obtuse

Right