

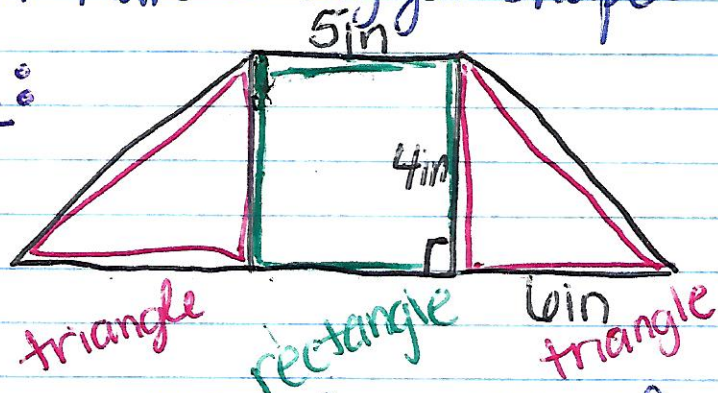
4.3ext Composite Figures

EQ: How can we find the area of a composite figure?

Composite Figure: a bunch of smaller shapes that make a bigger shape.

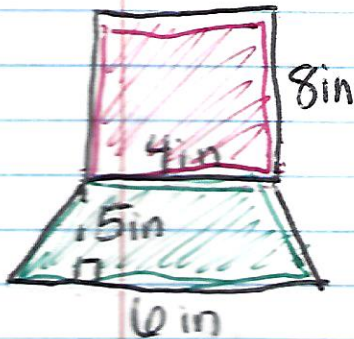
Example 1:

★ To find the area, we add the areas of all the smaller figures.



$$\begin{aligned} & \text{area of } \triangle + \text{area of } \square + \text{area of } \triangle \\ & \left[\frac{6 \times 4}{2} \right] + \left[4 \times 5 \right] + \left[\frac{6 \times 4}{2} \right] \\ & \frac{24}{2} + 20 + \frac{24}{2} \\ & 12 + 20 + 12 \\ & = 44 \text{ in}^2 \end{aligned}$$

Example 2:



$$\begin{aligned} & \text{area of } \square + \text{area of } \text{trapezoid} \\ & \left[8 \times 4 \right] + \left[\frac{(4+6) \times 5}{2} \right] \\ & 32 + \frac{10 \times 5}{2} \quad \frac{50}{2} \\ & 32 + 5 \times 5 \quad 25 \\ & 32 + 25 \\ & = 57 \text{ in}^2 \end{aligned}$$