

1.5 Greatest Common Factor (GCF)

EQ: How do we find the GCF of two numbers?

Factor: a number that divides evenly into a bigger number.

Example 1: Find the GCF of 21 and 35

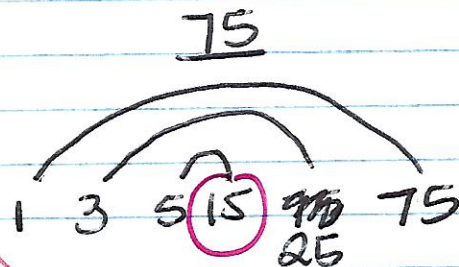
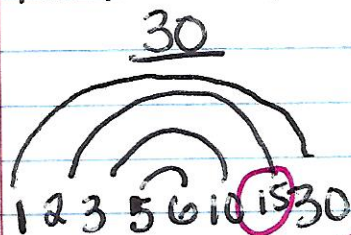
List Method

21		<u>1</u>	3	<u>7</u>	21
35		<u>1</u>	5	<u>7</u>	35

GCF = 7

Example 2: 30, 75.

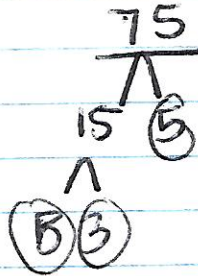
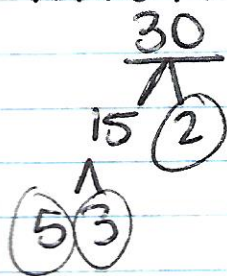
Rainbow Method



GCF: 15

Example 3: 30, 75

Prime Factorization



$$30: 5 \cdot 3 \cdot 2$$
$$75: 5 \cdot 3 \cdot 5$$

$5 \times 3 = 15$
GCF = 15